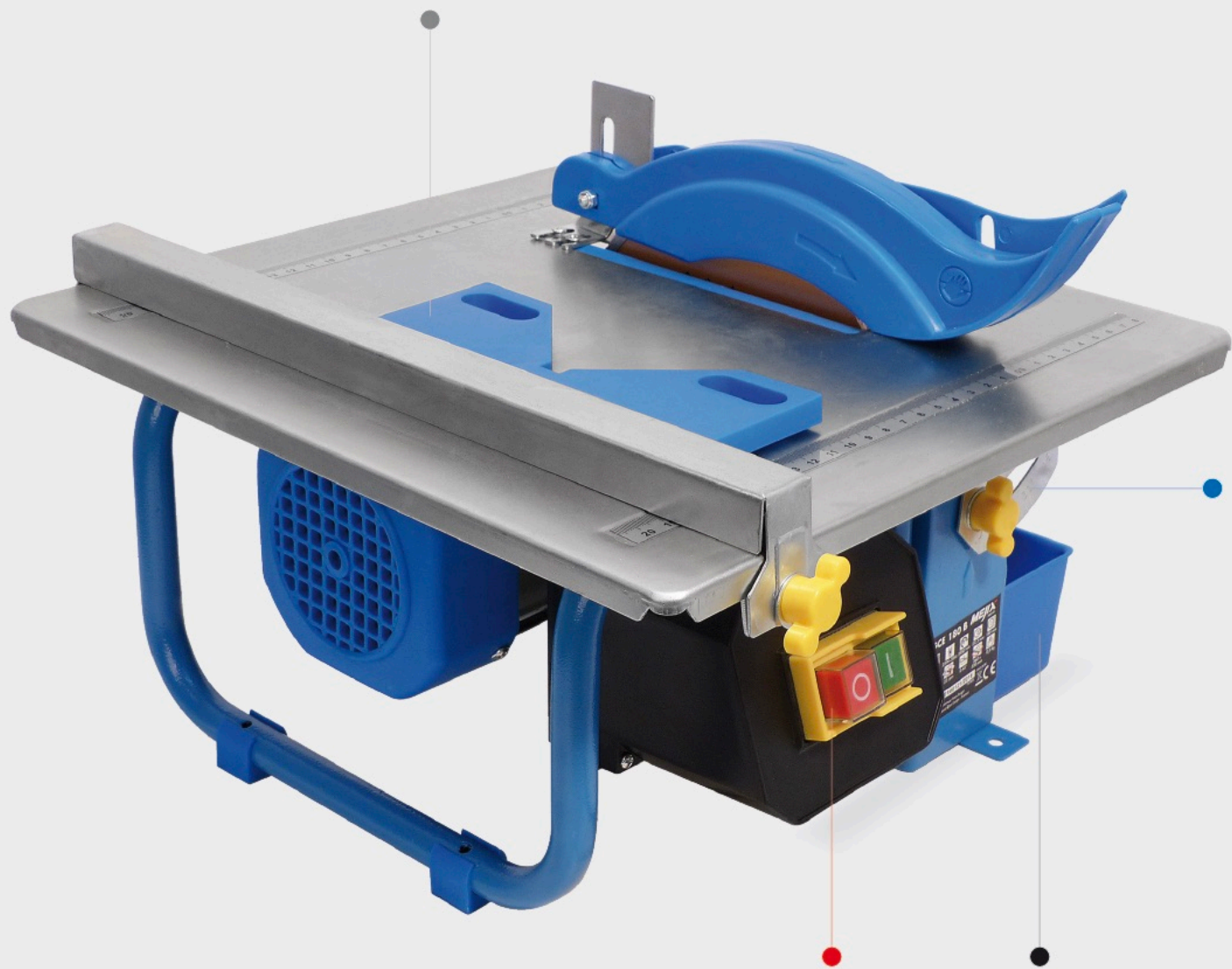


GCE 180B-ECO
700101

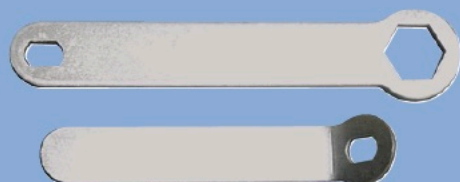
COUPE CARRELAGE ELECTRIQUE
Electric tile cutter



- Guide parallèle et guide d'onglets
- Interrupteur à manque de tension
- Plateau galvanisé
- Table orientable 45°
- Réservoir amovible
- Structure légère.
- Disque ø 180 mm, alésage 22,2 mm

- Parallel and miter guide
- No volt release switch
- Galvanized table
- Tilting table 45°
- Moveable tank
- Light structure.
- 180 mm disc, bore 22,2 mm.

INCLUS - INCLUDING



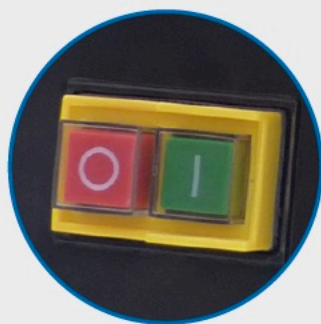
2 clés de service
2 mounting keys



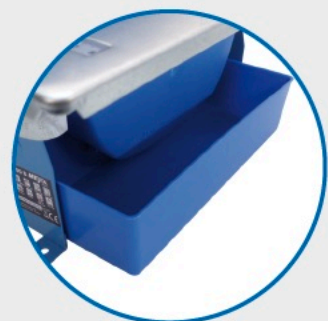
Informations techniques		Technical datas	
230 V~50 Hz			
450 W	2800 min ⁻¹	180 mm	22,2 mm
35 mm	23 mm	Tôle 330x360 mm	≤ 80 dBA



• Table orientable à 45°
45° cutting table.



• Interrupteur à manque de tension.
NVR switch.



• Bac à eau indépendant.
Removable water tank.



• Guide d'onglets.
Miter guide.

Informations logistiques		Logistics information	
Box (mm)			
370x350x183		3 450817 001016	
6 pcs	7,50 Kg	IP 54	

Consommable	Blades
REF: 180011 Disque diamant ø180x25,4x22,2 mm CDT: x 1 pc	 3 450811 800110
REF: 180012 Disque Grès cérame ø180x25,4x22,2 mm CDT: x 1 pc	 3 450811 800127