

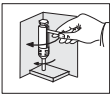
Giramaschi a cricchetto reversibile

Tap holder with ratchet / Porte-tarauds à cliquet / Giramachos de carraca / Werkzeugehalter mit knarre

Art. 15010 Serie corta - Short serie

15010
15011

Acciaio / Steel



| Gr. N. | Per maschi for taps | | L | pcs | cod. | € cad/each |
|-----------|---------------------|------------|-----|-----|---------|---------------|
| | M | BSW | | | | |
| 1 | 3 ÷ 10 | 1/8 ÷ 3/8 | 85 | 1 | 1501001 | |
| 2 | 5 ÷ 12 | 7/32 ÷ 1/2 | 100 | 1 | 1501002 | |

Art. 15011 Serie lunga - Long serie

| Gr. N. | Per maschi for taps | | L | pcs | cod. | € cad/each |
|-----------|---------------------|------------|-----|-----|---------|---------------|
| | M | BSW | | | | |
| 1 | 3 ÷ 10 | 1/8 ÷ 3/8 | 250 | 1 | 1501101 | |
| 2 | 5 ÷ 12 | 7/32 ÷ 1/2 | 300 | 1 | 1501102 | |

cod. €
cad/each

Griffe per / Jaws for 1501001 - 1501101 1501110

Griffe per / Jaws for 1501002 - 1501102 1501112

Giramaschi a mandrino tipo goodel

Goodel tap holder without ratchet / Porte-tarauds goodel sans cliquet / Giramachos goodel sin carraca / Werkzeugehalter ohne knarre

Art. 15005 Serie corta - Short serie

15005
15006

| Gr. N. | Per maschi for taps | | L | pcs | cod. | € cad/each |
|-----------|---------------------|------------|-----|-----|---------|---------------|
| | M | BSW | | | | |
| 1 | 3 ÷ 5 | 1/8 ÷ 3/16 | 62 | 1 | 1500501 | |
| 2 | 6 ÷ 8 | 1/4 ÷ 3/8 | 78 | 1 | 1500502 | |
| 3 | 9 ÷ 10 | 3/8 | 102 | 1 | 1500503 | |
| 4 | 10 ÷ 12 | 3/8 ÷ 1/2 | 102 | 1 | 1500504 | |

Art. 15006 Serie lunga - Long serie

| Gr. N. | Per maschi for taps | | L | pcs | cod. | € cad/each |
|-----------|---------------------|------------|-----|-----|---------|---------------|
| | M | BSW | | | | |
| 1 | 3 ÷ 5 | 1/8 ÷ 3/16 | 150 | 1 | 1500601 | |
| 2 | 6 ÷ 8 | 1/4 ÷ 3/8 | 150 | 1 | 1500602 | |
| 3 | 9 ÷ 10 | 3/8 | 150 | 1 | 1500603 | |
| 4 | 10 ÷ 12 | 3/8 ÷ 1/2 | 150 | 1 | 1500604 | |

PROLUNGA PER MASCHI Tap extension / Rallong pour tarauds / Prolungador para machos / Verlängerung für Gewindebohrer

10098



| Quadro Square (mm) | L | Per maschi for taps DIN 352 | cod. | € cad/each | Quadro Square (mm) | L | Per maschi for taps DIN 352 | cod. | € cad/each |
|--------------------------|-----|-----------------------------------|----------|---------------|--------------------------|-----|-----------------------------------|----------|---------------|
| | | | | | | | | | |
| 2.1 | 60 | M 1-2.6 | 10098021 | | 10.0 | 140 | | 10098100 | |
| 2.4 | 70 | | 10098024 | | 11.0 | 150 | M 18 | 10098110 | |
| 2.7 | 80 | M 3 | 10098027 | | 12.0 | 155 | M 20 | 10098120 | |
| 3.0 | 90 | M 3.5 | 10098030 | | 13.0 | 165 | | 10098130 | |
| 3.4 | 95 | M 4 | 10098034 | | 14.5 | 175 | M 22-24 | 10098145 | |
| 3.8 | 100 | | 10098038 | | 16.0 | 180 | M 27 | 10098160 | |
| 4.3 | 105 | | 10098043 | | 18.0 | 200 | M 30 | 10098180 | |
| 4.9 | 110 | M 4.5-8 | 10098049 | | 20.0 | 220 | M 33 | 10098200 | |
| 5.5 | 115 | M 9-10 | 10098055 | | 22.0 | 220 | M 36 | 10098220 | |
| 6.2 | 120 | M 11 | 10098062 | | 24.0 | 235 | M 39-42 | 10098240 | |
| 7.0 | 125 | M 12 | 10098070 | | 26.0 | 250 | | 10098260 | |
| 8.0 | 125 | | 10098080 | | 29.0 | 265 | M 45-48 | 10098290 | |
| 9.0 | 130 | M 14-16 | 10098090 | | 32.0 | 285 | M 52 | 10098320 | |