



**WELDLINE™**

by Lincoln Electric

# MIG/MAG TORCHES LGS2









# MIG/MAG TORCHES

## LGS2

LGS2 torches' range is our standard offer for MIG/MAG applications. With their simple and reliable design offering the best performance, LGS2 torches can meet the challenges of a variety of applications on site, from maintenance to manufacturing.

Our models are manufactured in Europe in compliance to the most demanding standard and the high quality components are the guarantee of an efficient welding.

Available in 1 water cooled, and 4 air cooled versions. LGS2 torches wear parts are compatible with the international standard.

## PRODUCT ADVANTAGES

- ◆ Modern design
- ◆ Made in Europe
- ◆ Super grip (*dual component handle*)
- ◆ Excellent ergonomics and light weight
- ◆ European standard components
- ◆ CE compliant
- ◆ Competitively priced

## APPLICATIONS

- ◆ Home / Farm / Shop
- ◆ Maintenance
- ◆ Fabrication
- ◆ Construction
- ◆ Automotive
- ◆ Vessel manufacture



# LGS2 TORCHES

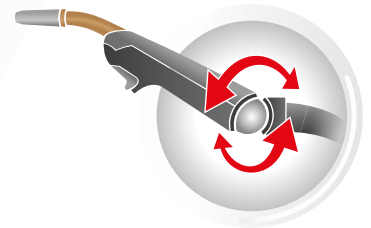
**EN 60974-7**

is the European norm requirement for MIG guns.

Simple and reliable, this range is adapted to the most common applications.



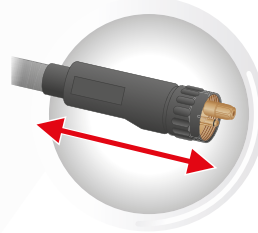
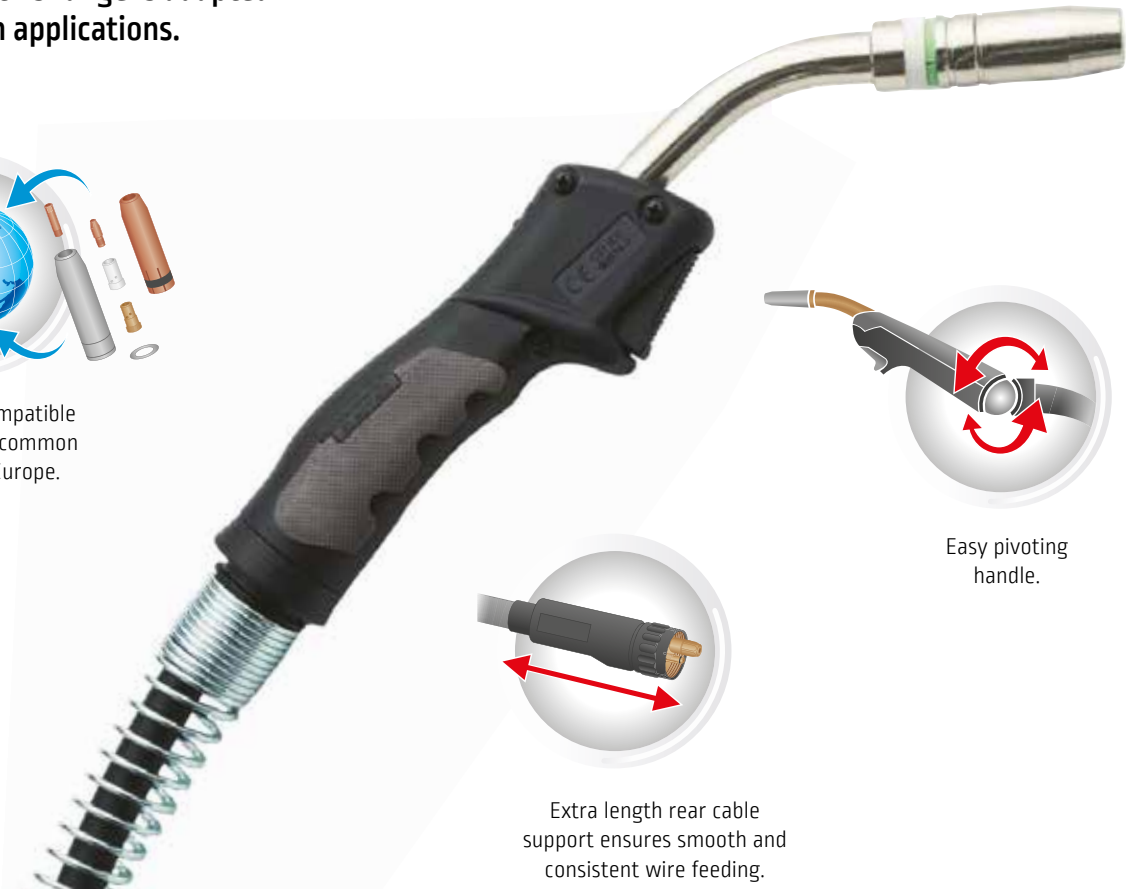
Wear parts compatible with the most common standard in Europe.



Easy pivoting handle.



Extra-flexible cable.



Extra length rear cable support ensures smooth and consistent wire feeding.

MODEL	AIR COOLING				WATER COOLING
	LGS2-150G	LGS2-250G	LGS2-240G	LGS2-360G	LGS2-505W
Duty cycle (CO <sub>2</sub> shielding gas)	180 A @ 60%	230 A @ 60%	250 A @ 60%	330 A @ 60%	500 A @ 100%
Applications	Thin plates, automotive industry	Thin plates, light fabrication	Thin plates, light fabrication	Vessel manufacture, steel structures	Heavy duty, high production
Wire diameter	Up to 1.0 mm	Up to 1.2 mm	Up to 1.2 mm	Up to 1.6 mm	Up to 2.4 mm
Original equipment	Contact tip	0.8 mm	1.0 mm	1.0 mm	1.2 mm
	Conical nozzle	12 mm	15 mm	12.5 mm	16 mm

To order					
3 m	W10429-15-3M	W10429-25-3M	W10429-24-3M	W10429-36-3M	W10429-505-3M
4 m	W10429-15-4M	W10429-25-4M	W10429-24-4M	W10429-36-4M	W10429-505-4M
5 m	W10429-15-5M	W10429-25-5M	W10429-24-5M	W10429-36-5M	W10429-505-5M

## Choose your gun

rating calculated using CO<sub>2</sub>

- Air cooled
- Water cooled

SERIES	Size	Rate	160A	180A	200A	230A	250A	270A	330A	350A	420A	500A
LGS2	150G	60%										
	250G											
	240G											
	360G											
	505W	100%										



# WEAR PARTS

## LGS2 150G

Nozzle		Ø mm	Contact tip	Contact tip holder	Nozzle spring
Con.	Part No.				
Con. D10	W000010787	Steel M 6 x 25	0.6	W000010820	W000277448
Con. D12.5	W000010786		0.6	W000010823*	
Cyl. D16	W000010788		0.8	W000010821	
Innershield	WP10468		0.8	W000010824*	
			0.9	WP10440-09	
			1.0	W000010822	
Aluminum		1.0	W000010825*		
		0.8	WP10440-08A		
		1.0	WP10440-10A		

LGS2 150G	Ø mm	Steel or PTFE liner			PTFE liner with copper spiral end		
		3 m	4 m	5 m	3 m	4 m	5 m
Steel (Steel liner)	0.6	W000010730 (blue)	W000010731 (blue)	W000010732 (blue)			
	0.8						
	0.9	W000010733 (red)	W000010734 (red)	W000010735 (red)			
	1.0						
Aluminum (PTFE liner)	0.8	WP10422-3M (blue)	WP10422-4M (blue)	WP10422-5M (blue)			
	1.0	W000010736 (red)	W000010737 (red)	W000010738 (red)	WP10419-3M (red)	WP10419-4M (red)	WP10419-5M (red)

## LGS2 250G

Nozzle		Ø mm	Contact tip	Contact tip holder	Nozzle spring
Con.	Part No.				
Con. D11	W000010791	Steel M 6 x 28	0.8	W000010826	W000277477
Con. D15	W000010790		0.8	W000010830*	
Cyl. D20	W000010792		0.9	WP10441-09	
			1.0	W000010827	
			1.0	W000010831*	
			1.2	W000010828	
Aluminum		1.2	W000010832*		
		0.8	WP10441-08A		
		1.0	W000010850		
		1.2	W000010851		

LGS2 250G	Ø mm	Steel or PTFE liner			PTFE liner with copper spiral end		
		3 m	4 m	5 m	3 m	4 m	5 m
Steel (Steel liner)	0.8	W000010730 (blue)	W000010731 (blue)	W000010732 (blue)			
	0.9						
	1.0	W000010733 (red)	W000010734 (red)	W000010735 (red)			
	1.2						
Aluminum (PTFE liner)	0.8	WP10422-3M (blue)	WP10422-4M (blue)	WP10422-5M (blue)			
	1.0	W000010736 (red)	W000010737 (red)	W000010738 (red)	WP10419-3M (red)	WP10419-4M (red)	WP10419-5M (red)
	1.2						

## LGS2 240G

Nozzle		Ø mm	Contact tip	Contact tip holder	Insulating diffuser
Con.	Part No.				
Con. D10	WP10461-9	Steel M 6 x 25	0.6	W000010820	WP10455-1
Con. D12.5	WP10461-4		0.8	W000010821	
			0.8	W000010824*	
Aluminum			0.9	WP10440-09	
			1.0	W000010822	
			1.0	W000010825	
		1.2	WP10440-12		
		1.2	WP10440-12C*		
		0.8	WP10440-08A		
		1.0	WP10440-10A		
		1.2	WP10440-12A		

LGS2 240G	Ø mm	Steel or PTFE liner			PTFE liner with copper spiral end		
		3 m	4 m	5 m	3 m	4 m	5 m
Steel (Steel liner)	0.6	W000010730 (blue)	W000010731 (blue)	W000010732 (blue)			
	0.8						
	0.9	W000010733 (red)	W000010734 (red)	W000010735 (red)			
	1.0						
Aluminum (PTFE liner)	0.8	WP10422-3M (blue)	WP10422-4M (blue)	WP10422-5M (blue)			
	1.0	W000010736 (red)	W000010737 (red)	W000010738 (red)	WP10419-3M (red)	WP10419-4M (red)	WP10419-5M (red)
	1.2						

Original equipment parts

\* CuCrZr contact tips



# WEAR PARTS

## LGS2 360G

**Contact tip holder**  
W000010722 (M8)

Nozzle	
Con. D12	W000010795
Con. D16	W000010794
Cyl. D20	W000010796

Material	Ø mm	Contact tip
Steel	0.8	W000010834
	0.8	W000010840 *
	1.0	W000010835
	1.0	W000010841 *
	1.2	W000010836
	1.2	W000010842 *
	1.32	WP10445-132C *
	1.4	W000262703
	1.6	W000010837
	1.6	W000010843 *
Aluminum	0.8	WP10445-08A
	1.0	W000010853
	1.2	W000010854
	1.6	W000010855

Insulating diffuser	
Standard	W000010780
High temperature	W000010781
Ceramic	W000010782

Material	Ø mm	Steel or PTFE liner			PTFE liner with copper spiral end			
		3 m	4 m	5 m	3 m	4 m	5 m	
LGS2 360G	Steel (Steel liner)	0.8	W000010730 (blue)	W000010731 (blue)	W000010732 (blue)	-	-	-
		1.0	W000010733 (red)	W000010734 (red)	W000010735 (red)	-	-	-
		1.2	W000010867 (yellow)	W000010868 (yellow)	W000010869 (yellow)	-	-	-
		1.4	-	-	-	-	-	-
		1.6	-	-	-	-	-	-
	Aluminum (PTFE liner)	0.8	WP10422-3M (blue)	WP10422-4M (blue)	WP10422-5M (blue)	-	-	-
		1.0	W000010736 (red)	W000010737 (red)	W000010738 (red)	WP10419-3M (red)	WP10419-4M (red)	WP10419-5M (red)
		1.2	-	-	-	-	-	-
		1.6	W000010745 (yellow)	W000010746 (yellow)	W000010747 (yellow)	-	-	-
		-	-	-	-	-	-	-

## LGS2 505W

Nozzle	
Con. D14	W000010798
Con. D16	W000010797
Cyl. D20	W000010799

Insulating diffuser	
Standard	W000010783
High temperature	W000010784
Ceramic	W000010785

**Isolating washer**  
WP10450-L77

Material	Ø mm	Contact tip
Steel	0.8	W000010834
	0.8	W000010840 *
	1.0	W000010835
	1.0	W000010841 *
	1.2	W000010836
	1.2	W000010842 *
	1.32	WP10445-132C *
	1.4	W000262703
	1.6	W000010837
	1.6	W000010843 *
Aluminum	0.8	WP10445-08A
	1.0	W000010853
	1.2	W000010854
	1.6	W000010855

Contact tip holder	
W000010724	WP10456-6 (Heavy duty)

Material	Ø mm	Steel or PTFE liner			PTFE liner with copper spiral end			
		3 m	4 m	5 m	3 m	4 m	5 m	
LGS2 505W	Steel (Steel liner)	0.8	W000010730 (blue)	W000010731 (blue)	W000010732 (blue)	-	-	-
		1.0	WP10410-3M (uncoated)	WP10410-4M (uncoated)	WP10410-5M (uncoated)	-	-	-
		1.2	W000010740 (uncoated)	W000010741 (uncoated)	W000010742 (uncoated)	-	-	-
		1.4	-	-	-	-	-	-
		1.6	-	-	-	-	-	-
	Aluminum (PTFE liner)	0.8	WP10422-3M (blue)	WP10422-4M (blue)	WP10422-5M (blue)	-	-	-
		1.0	W000010736 (red)	W000010737 (red)	W000010738 (red)	WP10419-3M (red)	WP10419-4M (red)	WP10419-5M (red)
		1.2	-	-	-	-	-	-
		1.6	W000010745 (yellow)	W000010746 (yellow)	W000010747 (yellow)	-	-	-
		-	-	-	-	-	-	-

Original equipment parts

\* CuCrZr contact tips



# ZIRCONIUM CONTACT TIP

LGS2 MIG/MAG torches can be equipped with CuCrZr contact tips that bring excellent performances compared to standard copper contact tips (Cu).

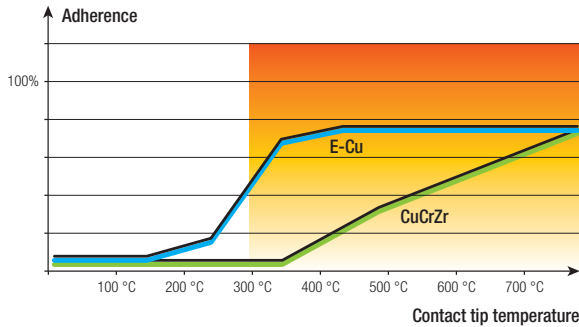
## The wear:

The electrical conductivity being superior in a CuCrZr alloy, the arc transfer will meet less resistance and the contact tip will wear out less rapidly.

## The lifetime:

The mechanical and thermal resistances also being superior to a copper alloy, the constraints, especially due to the wire friction and to the arc temperature, will be better tolerated with a CuCrZr contact tip.

Used in robotic welding for these advantages, the CuCrZr contact tip can improve the manual MIG/MAG welding performances as well.



Torch model	Screw thread	Wire diameter (mm)	To order
LGS2 150 G / LGS2 240 G	M6 x 25	0.6	W000010823
		0.8	W000010824
		1.0	W000010825
		1.2	WP10440-12C
LGS2 250 G	M6 x 28	0.8	W000010830
		1.0	W000010831
		1.2	W000010832
LGS2 360 G / LGS2 505 W	M8 x 30	0.8	W000010840
		1.0	W000010841
		1.2	W000010842
		1.32	WP10445-132C
		1.6	W000010843

# MAINTENANCE BOXES

## MIG-BOX for LGS2

The storage you were missing !



MIG-BOX LGS2 150G

To order W000387234

MIG-BOX LGS2 250G

To order W000387235

MIG-BOX LGS2 505W

To order W000387237

### Features:

- ◆ Dimensions 36 x 24 x 5 cm.
- ◆ Plastified pieces guide included.
- ◆ Up to 65 consumables included in each box.

### Features & benefits:

- ◆ No more losses.
- ◆ All the pieces on hand.
- ◆ Wear parts compatible with the most common standard in Europe.
- ◆ Ready-to-use.



MIG-BOX LGS2 240G

To order WP10429-K240

MIG-BOX LGS2 360G

To order W000387236





# BEING PRESENT LOCALLY MAKES US MORE AWARE GLOBALLY

**120+**  
YEARS OF EXPERIENCE

**325+**  
GLOBAL R&D TEAM



**3.0**  
BILLION USD REVENUE

**36**  
SOLUTION  
CENTERS

**11 000**  
EMPLOYEES WORLDWIDE

- Global Headquarters
- Solution Centers

## CUSTOMER ASSISTANCE POLICY

The business of The Lincoln Electric Company® is manufacturing and selling high quality welding equipment, consumables, and cutting equipment. Our challenge is to meet the needs of our customers and to exceed their expectations. On occasion, purchasers may ask Lincoln Electric for information or advice about their use of our products. Our employees respond to inquiries to the best of their ability based on information provided to them by the customers and the knowledge they may have concerning the application. Our employees, however, are not in a position to verify the information provided or to evaluate the engineering requirements for the particular weldment. Accordingly, Lincoln Electric does not warrant or guarantee or assume any liability with respect to such information or advice. Moreover, the provision of such information or advice does not create, expand, or alter any warranty on our products. Any express or implied warranty that might arise from the information or advice, including any implied warranty of merchantability or any warranty of fitness for any customers' particular purpose is specifically disclaimed.

Lincoln Electric is a responsive manufacturer, but the selection and use of specific products sold by Lincoln Electric is solely within the control of, and remains the sole responsibility of the customer. Many variables beyond the control of Lincoln Electric affect the results obtained in applying these types of fabrication methods and service requirements.

Subject to Change – This information is accurate to the best of our knowledge at the time of printing. Please refer to [www.lincolnelectric.eu](http://www.lincolnelectric.eu) for any updated information.



[www.lincolnelectriceurope.com](http://www.lincolnelectriceurope.com)

