



LINC TORCH

TIG TORCHES RANGE

QUALITY MAKES THE DIFFERENCE

www.lincolnelectric.eu

LINCOLN[®]
ELECTRIC
THE WELDING EXPERTS[®]



TABLE OF CONTENTS

WHAT'S NEW	4
RANGE / FEATURES / APPLICATIONS	5
ERGO & ERGO FLEX MODELS	6
LEVER MODELS	8
VALVE MODELS	8
RANGE OVERVIEW	9
TECHNICAL SPECIFICATIONS	15
TUNGSTEN ELECTRODES	15



WHAT'S NEW IN THE LINCOLN TIG TORCHES RANGE?

Lincoln Electric presents new TIG torches
Linc Torch Premium – LTP Premium

The Linc Torch Premium (LTP) range is enhancing our current range of TIG torches, providing better performance for the welder's comfort. Designed to meet the challenges of a variety of applications in maintenance, fabrication or construction sites. New torches are offered in both air-cooled and water-cooled version. High quality components and modern design decide about the welding process efficiency and operator's comfort.

Both LT and LTP torches are made in Europe, according to high quality standards. Their expendables are compatible with the international standard.

FEATURES

- DESIGNED FOR INDUSTRIAL USE ✓
- MODERN DESIGN ✓
- HIGH QUALITY COMPONENTS ✓
- IMPROVED ERGONOMICS ✓
- HIGH FLEXIBILITY CABLES ✓
- FIRST 50cm IN LEATHER[*] ✓
- TWIST MATE™ POWER PLUG
+ 5 PINS PLUG ✓
- EXPENDABLES CONFORMING
THE INTERNATIONAL STANDARD ✓
- UP/DOWN MODULE
(1 BUTTON + POTI 10KΩ) Opt.

[*] «Valve» version excluded



RANGE / FEATURES / APPLICATIONS

Two ranges:

- LT Standard
- **LTP Premium** **NEW!**

Four configurations:

- Ergo
- Ergo Flex
- Valve
- Lever

Five sizes:

- 17
- 26
- 20
- 18
- 18 SC

Features / Advantages LTP

- High quality components
- Excellent grip
- High flexibility cable
- Terminal part in leather
[«Valve» version excluded]
- Optional up/down module
- Expendables conforming
the international standard
- CE compliant

Applications

- Home/Farm/Shop
- Maintenance
- Fabrication
- Construction

ERGO



ERGO FLEX



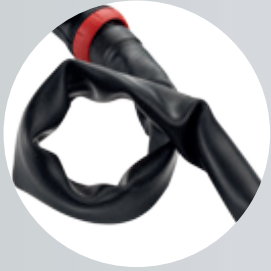
VALVE



LEVER



LTP TORCHES: STRENGTHS



High flexibility cable



Terminal part in leather
[«Valve» version excluded]



Ball joint

LTP ERGO & ERGO FLEX



MADE IN
EUROPE



Expendables compatible
with the international
standard

Switch control housing
with extra grip surface

Cap with grip studs for a good grip

Easy to disassemble (no screws)

Bayonet ring to unlock
the switch module



Ergonomic Grip



Easy interchangeable switch module
(no screws)



Optional Potentiometer
(analog UP/DOWN)



1 button module
(standard)



1 button + poti module
(optional)

The torch comes with **ONE** button and a 5 pin plug.

Optional Plug & Play UP/DOWN kit

(Item number: KP10529-1) :

- **ONE** button + 10 kΩ poti module
- A 6-pin plug



Semi - closed switch system,
Protects from moisture and dirt

Ball joint at the end of the handle

First 50cm in leather,
then neoprene for top flexibility

LTP LEVER



Switch lever for high sensitivity



Classic "Tube" design

Expendables compatible with the international standard.



Modern design

Easy to disassemble (no screws)

First 50cm in leather, then neoprene for top flexibility

LTP VALVE



Cap with grip studs for a good grip

Ball joint at the end of the handle

RANGE OVERVIEW

Cooling	Size	Power rating DC-AC	Length (m)							
				LTP Ergo	LT Ergo	LTP Ergo Flex	LTP Valve Conn. 10-25	LTP Valve Conn. 35-50	LTP Lever	LT Lever
	17	140A DC 100A AC @ 35%	4	K10529-17-4	K10513-17-4	--	K10529-17-4VS	K10529-17-4V	--	K10513-17-4F
			8	K10529-17-8	K10513-17-8	--	--	K10529-17-8V	K10529-17-8F	--
	26	180A DC 130A AC @ 35%	4	K10529-26-4	K10513-26-4	K10529-26-4X	--	K10529-26-4V	--	K10513-26-4F
			8	K10529-26-8	K10513-26-8	K10529-26-8X	--	K10529-26-8V	K10529-26-8F	--
			12	K10529-26-12	--	--	--	--	--	--
		20	220A DC 165A AC @ 100%	4	K10529-20-4	--	--	--	--	--
8				K10529-20-8	--	--	--	--	K10529-20-8F	--
18		320A DC 230A AC @ 100%	4	K10529-18-4	K10513-18-4	K10529-18-4X	--	--	--	K10513-18-4F
			8	K10529-18-8	K10513-18-8	K10529-18-8X	--	--	K10529-18-8F	--
18SC		400A DC 280A AC @ 100%	8	K10529-18SC-8	--	--	--	--	--	--

"F" model torches feature a lever grip

"V" model torches have a gas valve for use with power sources without built-in solenoid valve

"X" model torches feature a flexible head for greater comfort and improved access to tight spaces

TRIGGER PLUG

The trigger plug is easily interchangeable allowing the use of the UP/DOWN poti module and the connection to third party welders



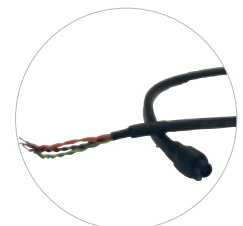
Quick connection system



Standard 5-pin plug
Item number : KP10529-5



Optional 6-pin plug
Item number : KP10529-4



Optional quick connector with loose leads for third party welders
Item number : KP10529-6



Air cooled

140A DC-100A AC @ 35%

LTP 17 G / LT 17 G

STANDARD RANGE

- LT 17 G 4M **Ergo** K10513-17-4
- LT 17 G 8M **Ergo** K10513-17-8
- LT 17 G 4M **Lever** K10513-17-4F

PREMIUM RANGE

- LTP 17 G 4M **Ergo** K10529-17-4
- LTP 17 G 8M **Ergo** K10529-17-8
- LTP 17 G 4M **Valve Conn. 10-25** K10529-17-4VS
- LTP 17 G 4M **Valve Conn. 35-50** K10529-17-4V
- LTP 17 G 8M **Valve Conn. 35-50** K10529-17-8V
- LTP 17 G 8M **Lever** K10529-17-8F



LTP
PREMIUM

LTP 17 G
Ergo

- CAP**
Short: KP10509-1
57Y04
- Medium: KP10509-2
57Y05
- Long: KP10509-3
57Y02

O RING
KP10509-4

INSULATOR
KP10511-1
18CG

COLLET
KP10503-size

Φ (mm)	Lincoln Part.n.	Int. Part.n.
1.0	KP10503-10	10N22
1.6	KP10503-16	10N23
2.4	KP10503-24	10N24
3.2	KP10503-32	10N25
4.0	KP10503-40	54N20

ADAPTOR
(ONLY NEEDED FOR GAS LENS)
KP10511-2
54N01

Φ (mm)	Lincoln Part.n.	Int. Part.n.
6.5	KP10514-4	10N50
8.0	KP10514-5	10N49
9.5	KP10514-6	10N48
11.0	KP10514-7	10N47
12.5	KP10514-8	10N46
16.0	KP10514-10	10N45
19.0	KP10514-12	10N44

COLLET BODY
KP10505-size

CERAMIC NOZZLE
KP10514-size

GAS LENS
KP10507-size

CERAMIC NOZZLE
KP10515-size

Φ (mm)	Lincoln Part.n.	Int. Part.n.
1.0	KP10507-10	45V24
1.6	KP10507-16	45V25
2.4	KP10507-24	45V26
3.2	KP10507-32	45V27
4.0	KP10507-40	45V28

Φ (mm)	Lincoln Part.n.	Int. Part.n.
6.5	KP10515-4	54N18
8.0	KP10515-5	54N17
9.5	KP10515-6	54N16
11.0	KP10515-7	54N15
12.5	KP10515-8	54N14
17.5	KP10515-12	54N19



LT
STANDARD

LT 17 G
Ergo



LTP
PREMIUM

LTP 17 G
Valve



LT
STANDARD

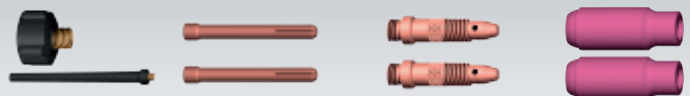
LT 17 G
Lever



LTP
PREMIUM

LTP 17 G
Lever

Accessory Kits:



KP10516-11: Short & Long Cap, Collet & Collet Body 1.6mm & 2.4mm, Ceramic Nozzles 6.5mm & 11mm

KP10516-12: Short & Long Cap, Collet & Collet Body 2.4mm & 3.2mm, Ceramic Nozzles 9.5mm & 12.5mm

All the expendables are sold **in packs of 10 pcs.**

The part numbers in **bold** are the ones which are standard in the torch.

LTP 26 G / LT 26 G

STANDARD RANGE

LT 26 G 4M	Ergo	K10513-26-4
LT 26 G 8M	Ergo	K10513-26-8
LT 26 G 4M	Lever	K10513-26-4F

PREMIUM RANGE

LTP 26 G 4M	Ergo	K10529-26-4	LTP 26 G 4M	Ergo Flex	K10529-26-4X
LTP 26 G 8M	Ergo	K10529-26-8	LTP 26 G 8M	Ergo Flex	K10529-26-8X
LTP 26 G 4M	Lever	K10529-26-12	LTP 26 G 4M	Valve Conn. 35-50	K10529-26-4V
			LTP 26 G 8M	Valve Conn. 35-50	K10529-26-8V
			LTP 26 G 8M	Lever	K10529-26-8F



LTP
PREMIUM

LTP 26 G
Ergo / Flex

CAP	O-RING	INSULATOR
Short: KP10509-1 57Y04	KP10509-4	KP10511-1 18CG
Medium: KP10509-2 57Y05		
Long: KP10509-3 57Y02		

COLLET
KP10503-size

Φ (mm)	Lincoln Part.n.	Int. Part.n.
1.0	KP10503-10	10N22
1.6	KP10503-16	10N23
2.4	KP10503-24	10N24
3.2	KP10503-32	10N25
4.0	KP10503-40	54N20

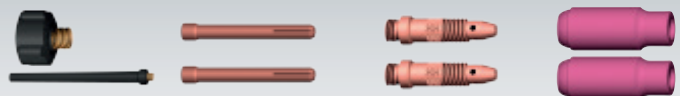
ADAPTOR
(ONLY NEEDED FOR GAS LENS)
KP10511-2
54N01

Φ (mm)	Lincoln Part.n.	Int. Part.n.	Φ (mm)	Lincoln Part.n.	Int. Part.n.
6.5	KP10514-4	10N50	COLLET BODY KP10505-size	CERAMIC NOZZLE KP10514-size	
8.0	KP10514-5	10N49			
9.5	KP10514-6	10N48			
11.0	KP10514-7	10N47	GAS LENS KP10507-size	CERAMIC NOZZLE KP10515-size	
12.5	KP10514-8	10N46			
16.0	KP10514-10	10N45			
19.0	KP10514-12	10N44			

Φ (mm)	Lincoln Part.n.	Int. Part.n.	Φ (mm)	Lincoln Part.n.	Int. Part.n.
1.0	KP10507-10	45V24	6.5	KP10515-4	54N18
1.6	KP10507-16	45V25	8.0	KP10515-5	54N17
2.4	KP10507-24	45V26	9.5	KP10515-6	54N16
3.2	KP10507-32	45V27	11.0	KP10515-7	54N15
4.0	KP10507-40	45V28	12.5	KP10515-8	54N14
			17.5	KP10515-12	54N19



Accessory Kits:



KP10516-11: Short & Long Cap, Collet & Collet Body 1.6mm & 2.4mm, Ceramic Nozzles 6.5mm & 11mm

KP10516-12: Short & Long Cap, Collet & Collet Body 2.4mm & 3.2mm, Ceramic Nozzles 9.5mm & 12.5mm

All the expendables are sold **in packs of 10 pcs.**

The part numbers in **bold** are the ones which are standard in the torch.



Water cooled **220A DC-165A AC @ 100%**

LTP 20 W / LT 20 W

STANDARD RANGE

LT 20 W 4M Lever K10513-20-4F

PREMIUM RANGE

LTP 20 W 4M Ergo K10529-20-4

LTP 20 W 8M Ergo K10529-20-8

LTP 20 W 8M Lever K10529-20-8F



LTP
PREMIUM

LTP 20 W
Ergo

- CAP
Short: KP10508-1
41V33
- Medium: KP10508-2
41V35
- Long: KP10508-3
41V24

O RING
KP10508-4

INSULATOR
KP10510-1
598882

COLLET
KP10502-size

Φ (mm)	Lincoln Part.n.	Int. Part.n.
1.0	KP10502-10	13N21
1.6	KP10502-16	13N22
2.4	KP10502-24	13N23
3.2	KP10502-32	13N24

Φ (mm)	Lincoln Part.n.	Int. Part.n.	Φ (mm)	Lincoln Part.n.	Int. Part.n.
6.5	KP10512-4	13N08	6.5	KP10512-4	13N08
8.0	KP10512-5	13N09	8.0	KP10512-5	13N09
9.5	KP10512-6	13N10	9.5	KP10512-6	13N10
11.0	KP10512-7	13N11	11.0	KP10512-7	13N11
12.5	KP10512-8	13N12	12.5	KP10512-8	13N12
16.0	KP10512-10	13N13	16.0	KP10512-10	13N13



COLLET BODY
KP10504-size



CERAMIC NOZZLE
KP10512-size

Φ (mm)	Lincoln Part.n.	Int. Part.n.	Φ (mm)	Lincoln Part.n.	Int. Part.n.
6.5	KP10513-4	53N58	6.5	KP10513-4	53N58
8.0	KP10513-5	53N59	8.0	KP10513-5	53N59
9.5	KP10513-6	53N60	9.5	KP10513-6	53N60
11.0	KP10513-7	53N61	11.0	KP10513-7	53N61
12.5	KP10513-8	53N61S	12.5	KP10513-8	53N61S

GAS LENS
KP10506-size

CERAMIC NOZZLE
KP10513-size



LT
STANDARD

LT 20 W
Lever



LTP
PREMIUM

LTP 20 W
Lever

Accessory Kits:



KP10516-10: Short & Long Cap, Collet & Collet Body 1.6mm & 2.4mm, Ceramic Nozzles 6.5mm & 11mm

All the expendables are sold **in packs of 10 pcs.**

The part numbers in **bold** are the ones which are standard in the torch.

LTP 18 W / LT 18 W

STANDARD RANGE

- LT 18 W 4M Ergo K10513-18-4
- LT 18 W 8M Ergo K10513-18-8
- LT 18 W 4M Lever K10513-18-4F

PREMIUM RANGE

- LTP 18W 4M Ergo K10529-18-4
- LTP 18W 8M Ergo K10529-18-8
- LTP 18W 4M Ergo Flex K10529-18-4X
- LTP 18W 8M Ergo Flex K10529-18-8X
- LTP 18W 8M Lever K10529-18-8F



LTP
PREMIUM

LTP 18 W
Ergo/Flex

CAP

Short: KP10509-1
57Y04

Medium: KP10509-2
57Y05

Long: KP10509-3
57Y02

O RING
KP10509-4

INSULATOR
KP10511-1
18CG

COLLET
KP10503-size

Φ (mm)	Lincoln Part.n.	Int. Part.n.
1.0	KP10503-10	10N22
1.6	KP10503-16	10N23
2.4	KP10503-24	10N24
3.2	KP10503-32	10N25
4.0	KP10503-40	54N20

ADAPTOR
(ONLY NEEDED FOR GAS LENS)
KP10511-2
54N01

Φ (mm)	Lincoln Part.n.	Int. Part.n.	Φ (mm)	Lincoln Part.n.	Int. Part.n.
6.5	KP10514-4	10N50	8.0	KP10514-5	10N49
8.0	KP10514-5	10N49	9.5	KP10514-6	10N48
9.5	KP10514-6	10N48	11.0	KP10514-7	10N47
1.0	KP10505-10	10N30	12.5	KP10514-8	10N46
1.6	KP10505-16	10N31	16.0	KP10514-10	10N45
2.4	KP10505-24	10N32	19.0	KP10514-12	10N44
3.2	KP10505-32	10N28			

COLLET BODY
KP10505-size

CERAMIC NOZZLE
KP10514-size

GAS LENS
KP10507-size

CERAMIC NOZZLE
KP10515-size

Φ (mm)	Lincoln Part.n.	Int. Part.n.	Φ (mm)	Lincoln Part.n.	Int. Part.n.
1.0	KP10507-10	45V24	6.5	KP10515-4	54N18
1.6	KP10507-16	45V25	8.0	KP10515-5	54N17
2.4	KP10507-24	45V26	9.5	KP10515-6	54N16
3.2	KP10507-32	45V27	11.0	KP10515-7	54N15
4.0	KP10507-40	45V28	12.5	KP10515-8	54N14
			17.5	KP10515-12	54N19



Accessory Kits:



KP10516-11: Short & Long Cap, Collet & Collet Body 1.6mm & 2.4mm, Ceramic Nozzles 6.5mm & 11mm

KP10516-12: Short & Long Cap, Collet & Collet Body 2.4mm & 3.2mm, Ceramic Nozzles 9.5mm & 12.5mm

All the expendables are sold **in packs of 10 pcs.**

The part numbers in **bold** are the ones which are standard in the torch.

Water cooled 400A DC-280A AC @ 100%

LTP 18 W SC

PREMIUM RANGE

LTP 18 W SC Ergo K10529-18SC-8



LTP
PREMIUM

LTP 18 W SC
Ergo

- CAP**
Short: KP10509-1
57Y04
- O RING**
KP10509-4
- INSULATOR**
KP10511-18
18NG
- COLLET**
KP10503-size
- CAP**
Medium: KP10509-2
57Y05
- CAP**
Long: KP10509-3
57Y02

Φ (mm)	Lincoln Part.n.	Int. Part.n.
1.0	KP10504-53	<i>NCB-53</i>
1.6		
2.4		
3.2		
4.0	KP10504-36	<i>NCB-36</i>



Φ (mm)	Lincoln Part.n.	Int. Part.n.
1.0	KP10503-10	<i>10N22</i>
1.6	KP10503-16	<i>10N23</i>
2.4	KP10503-24	10N24
3.2	KP10503-32	<i>10N25</i>
4.0	KP10503-20HD	<i>54N20HD</i>

Φ (mm)	Lincoln Part.n.	Int. Part.n.
1.0	KP10507-804	<i>18GL04</i>
1.6	KP10507-816	<i>18GL16</i>
2.4	KP10507-832	<i>18GL32</i>
3.2	KP10507-818	<i>18GL18</i>
4.0	KP10507-853	<i>18GL53</i>

CERAMIC NOZZLE
KP10515-size

Φ (mm)	Lincoln Part.n.	Int. Part.n.
6.5	KP10515-4	<i>54N18</i>
8.0	KP10515-5	<i>54N17</i>
9.5	KP10515-6	54N16
11.0	KP10515-7	<i>54N15</i>
12.5	KP10515-8	<i>54N14</i>
17.5	KP10515-12	<i>54N19</i>

Accessory Kits:



KP10516-13: Short & Long Cap, Collet & Collet Body 3.2mm & 4.0mm, Ceramic Nozzles 9.5mm & 12.5mm

All the expendables are sold **in packs of 10 pcs.**

The part numbers in **bold** are the ones which are standard in the torch.

TECHNICAL SPECIFICATIONS

	LTP	LT
Operating Temperature:	-10°C ~ 55°C	-10°C ~ 40°C
Storage Temperature:	-25°C ~ 55°C	
Relative air humidity:	Up to 90% at 20°C	

		LTP 17G	LT 17G	LTP 18W	LT 18W	LTP 18W SC	LTP 20W	LT 20W	LTP 26G	LT 26G
Power rating	DC	140A		320A		400A	220A		180A	
	AC	100A		230A		280A	165A		130A	
Duty Cycle		35%		100%		100%	100%		35%	
Electrode Φ (mm)		1.0÷2.4		1.0÷4.0		1.0÷4.0	1.0÷3.2		1.0÷4.0	
Voltage class		L		L		L	L		L	
Welding gas		Argon DIN 32 526/1		Argon DIN 32 526/1		Argon DIN 32 526/1	Argon DIN 32 526/1		Argon DIN 32 526/1	
Gas flow rate (lt/min)		7÷15		7÷20		7÷20	8÷22	8÷20	7÷18	
Cooling		Gas		Water		Water	Water		Gas	
Highest temperature cooling medium at entry hose package		-		60°C	50°C	60°C	60°C	50°C	-	
Minimum quantity of cooling flow (lt/min)		-		1.0	0.9	1.0	1.0	0.7	-	
Lowest pressure of entry		-		2.5 bar		2.5 bar	2.5 bar		-	
Highest pressure of entry		-		5.0 bar	3.5 bar	5.0 bar	5.0 bar	3.5 bar	-	
Net weight [Kg] (4mt) (*)		1.82/2.02	2.00/2.10	2.51	2.38/3.53	-	1.71	2.36	2.44/2.54	2.33/2.38
Net weight [Kg] (8mt) (*)		3.39/3.55	3.95	4.51	3.65	4.56	2.91	-	4.20/4.30	4.12
Net weight [Kg] (12mt)		-		-		-	-		6.06	-

(*) Weight depends on the torch version

NON-RADIOACTIVE TUNGSTEN ELECTRODES

A complete range of tungsten electrodes is proposed as alternative to thoriated, offering superior welding characteristics and avoiding problems with radioactivity.

- Longer lifetime
- Smaller diameter with same welding currents
- Less grinding
- Faster starts
- Better arc stability

TYPE	COLOUR	APPLICATION
WP – Pure	Green	Nickel, Bronze, Nickel Alloys, Aluminium, Aluminium Alloys, Magnesium, Magnesium Alloys
WR2 – Blended Oxide	Turquoise	Aluminium, Steel, Stainless Steel, Copper and Brass applications
WLa15 – Lanthanated	Gold	Aluminium, Aluminium Alloys, Stainless Steel, Copper, Bronze, Titanium
WCe20 – Ceriated	Grey	Steel Carbon, Steel, Stainless Steel, Bronze, Copper, Titanium



ITEM n°: L = 150mm	ITEM n°: L = 175mm	Diameter (mm)	Pack
2124905	2124058	1.0	10
2124916	2124069	1.6	10
2124927	2124074	2.0	10
2124938	2124080	2.4	10
2124949	2124091	3.2	10
2124960	2124102	4.0	5
2124410	2124300	1.0	10
2124421	2124311	1.6	10
2124432	2124322	2.0	10
2124443	2124333	2.4	10
2124454	2124344	3.2	10
2124806	2105479	1.0	10
2124817	2105396	1.6	10
2124828	2105417	2.0	10
2124839	2105414	2.4	10
2124850	2105419	3.2	10
-	2105480	4.0	5
2124707	2104797	1.0	10
2124718	2103864	1.6	10
2124729	2103868	2.0	10
2124740	2103865	2.4	10
2124751	2103866	3.2	10
2124762	2103867	4.0	5



CUSTOMER ASSISTANCE POLICY

The business of The Lincoln Electric Company® is manufacturing and selling high quality welding equipment, consumables, and cutting equipment. Our challenge is to meet the needs of our customers and to exceed their expectations. On occasion, purchasers may ask Lincoln Electric for information or advice about their use of our products. Our employees respond to inquiries to the best of their ability based on information provided to them by the customers and the knowledge they may have concerning the application. Our employees, however, are not in a position to verify the information provided or to evaluate the engineering requirements for the particular weldment. Accordingly, Lincoln Electric does not warrant or guarantee or assume any liability with respect to such information or advice. Moreover, the provision of such information or advice does not create, expand, or alter any warranty on our products. Any express or implied warranty that might arise from the information or advice, including any implied warranty of merchantability or any warranty of fitness for any customers' particular purpose is specifically disclaimed.

Lincoln Electric is a responsive manufacturer, but the selection and use of specific products sold by Lincoln Electric is solely within the control of, and remains the sole responsibility of the customer. Many variables beyond the control of Lincoln Electric affect the results obtained in applying these types of fabrication methods and service requirements.

Subject to Change – This information is accurate to the best of our knowledge at the time of printing. Please refer to www.lincolnelectric.com for any updated information.