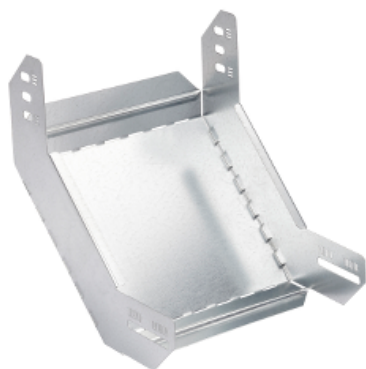


Product data sheet

Characteristics

CSU33233002

Stago - internal riser flat - 35x300 mm - steel - pre-galvanized



Main

Range of product	Stago
Product or component type	Riser

Complementary

Operating angle	90 °
Direction change type	Vertical
Inner radius	180 mm
Adjustment	Foldable
Product destination	Cable tray KB184 H= 35 mm W= 300 mm Cable tray KB284 H= 35 mm W= 300 mm
Fixing mode	By screw
Material with surface treatment	Steel pre-galvanized
Corrosion class	C2

Environment

Mounting location	Partly outdoor environment with low exposure to corrosion ware-houses and parking garages
-------------------	---

Packing Units

Unit Type of Package 1	PCE
Number of Units in Package 1	1
Package 1 Weight	526 g
Package 1 Height	1 cm
Package 1 width	25.1 cm
Package 1 Length	46.2 cm

Disclaimer: This documentation is not intended as a substitute for and is not to be used for determining suitability or reliability of these products for specific user applications